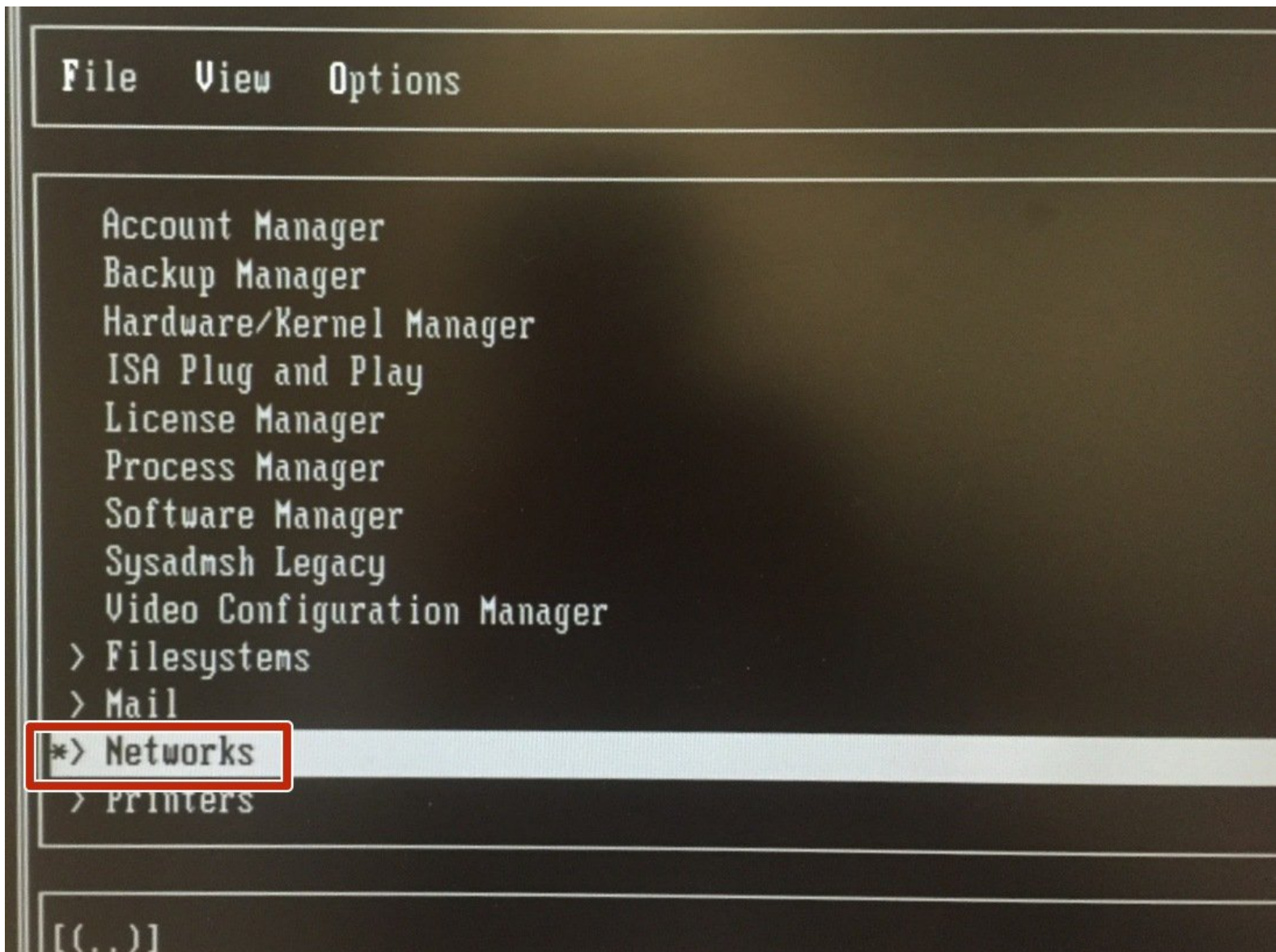




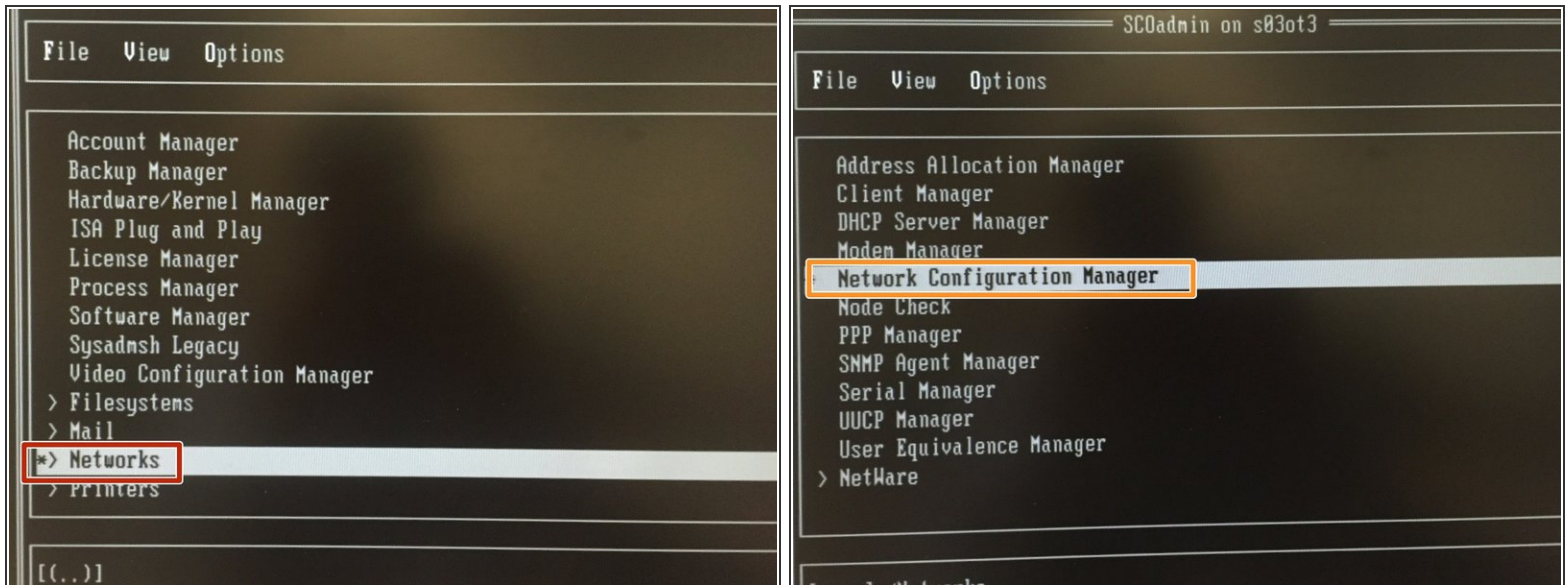
# SCO Network Card Driver (Network configuration)

Procedure 3 - Network configuration

Written By: Alejandro Pagán Albertos

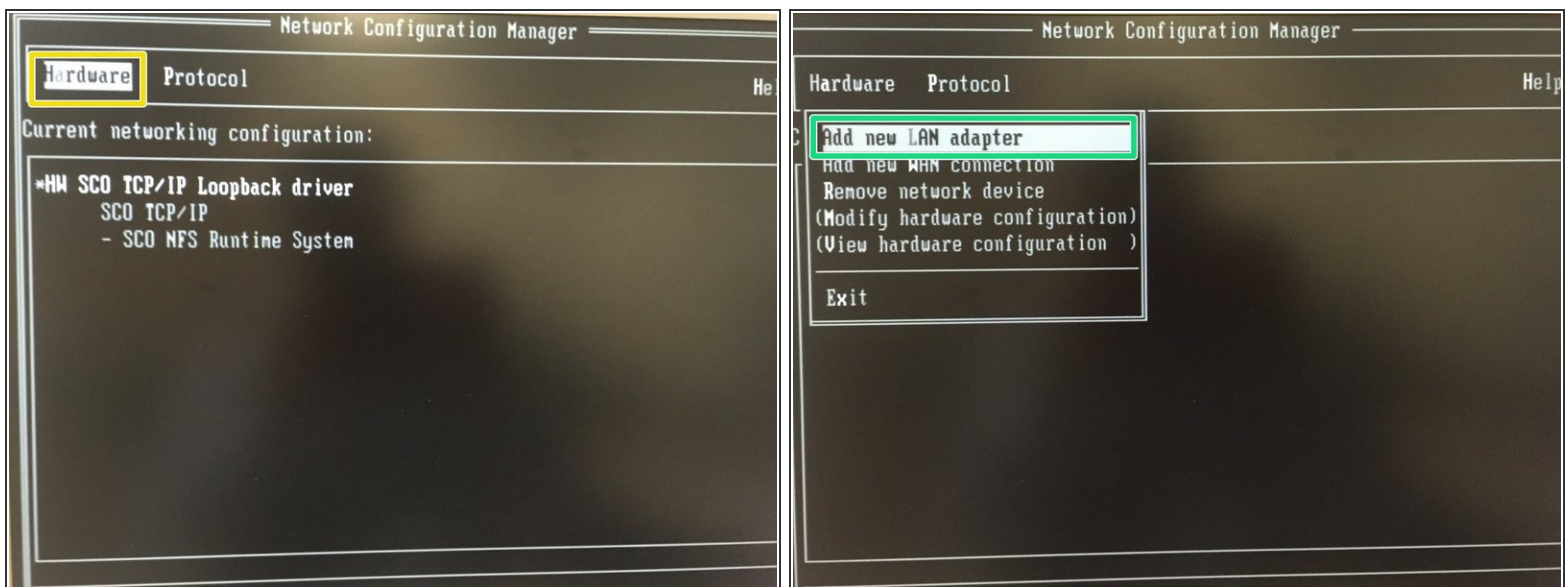


## Step 1 — SCO Network Card Driver (Network configuration)



- Select *Networks*
- Select *Network Configuration Manager*

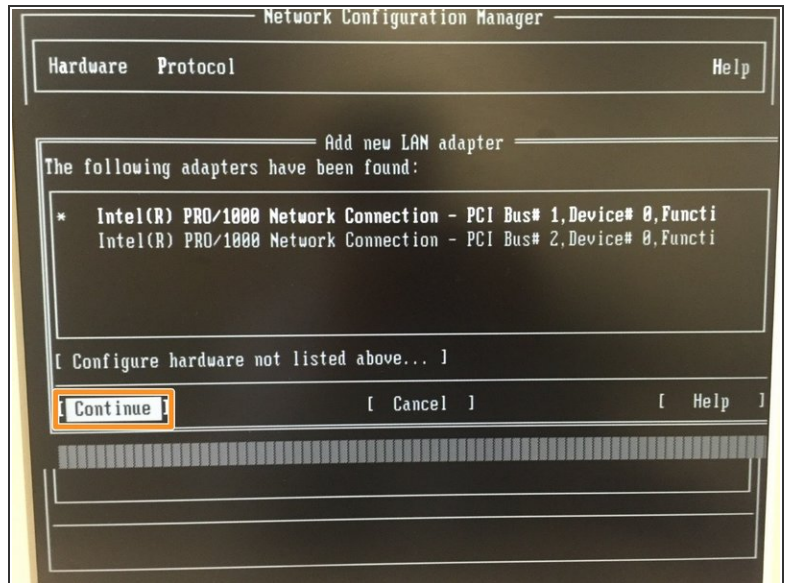
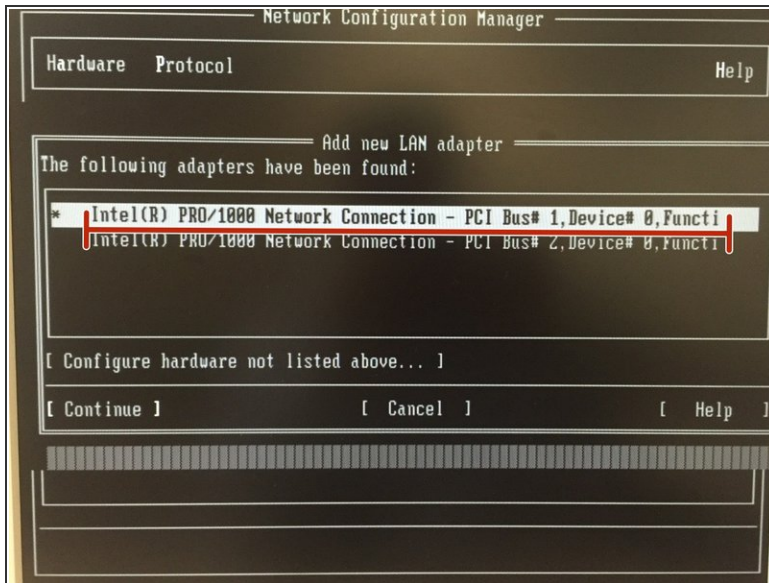
## Step 2



- Select *Hardware*
- After *Add new LAN adapter*

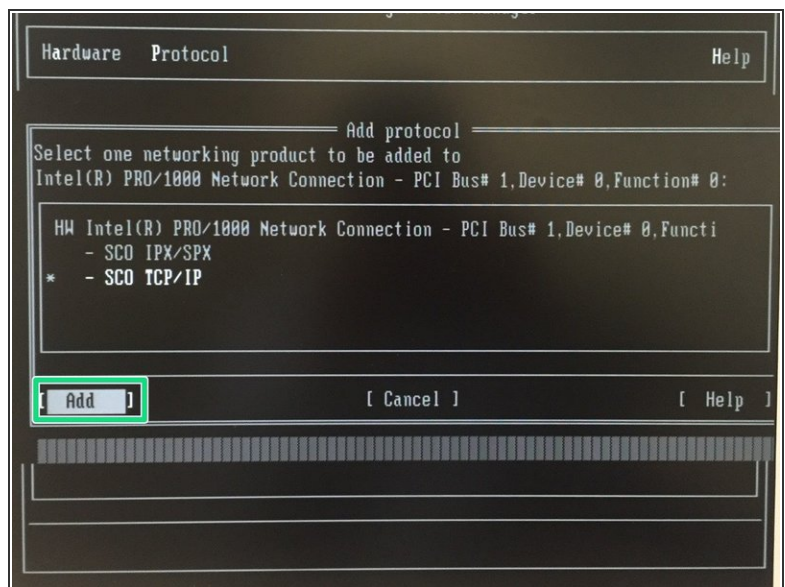
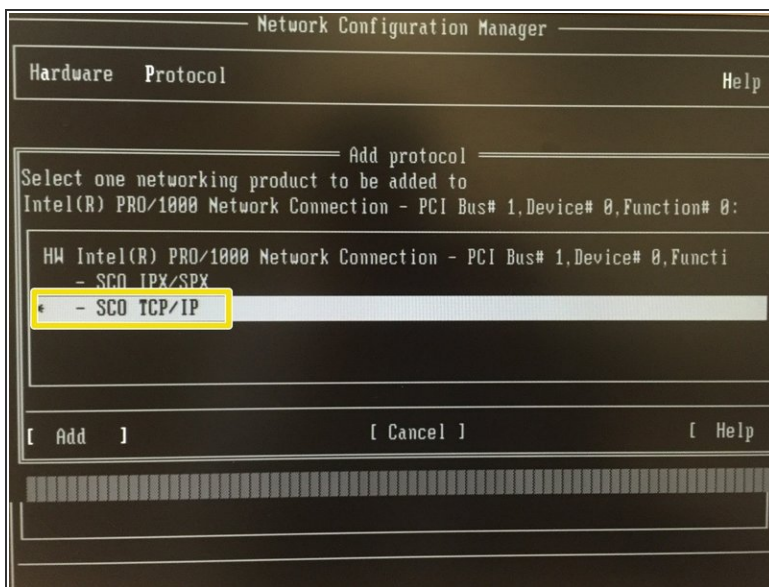


## Step 3



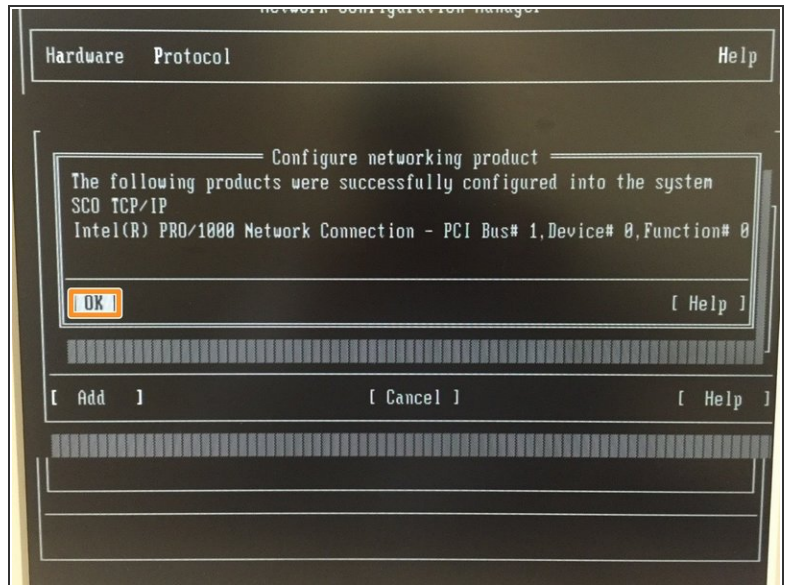
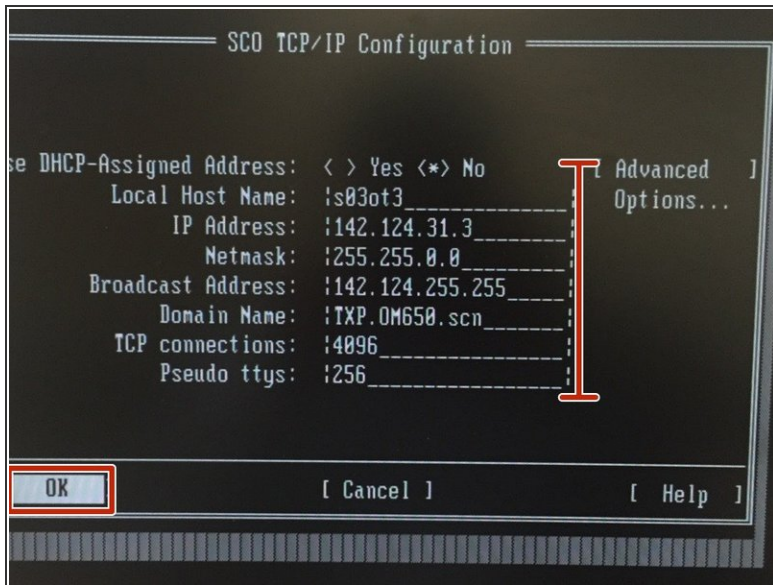
- Select the adapter *Inter(R) PRO/100.....*
- And select *Continue*

## Step 4



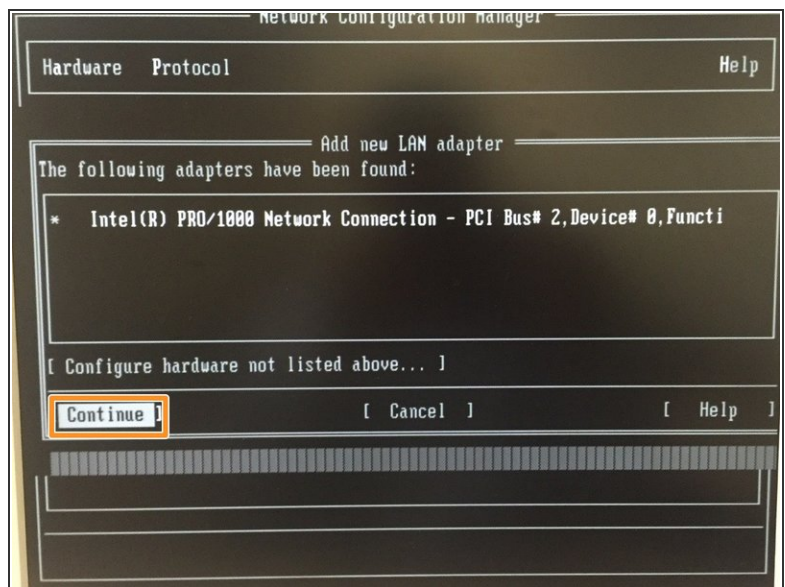
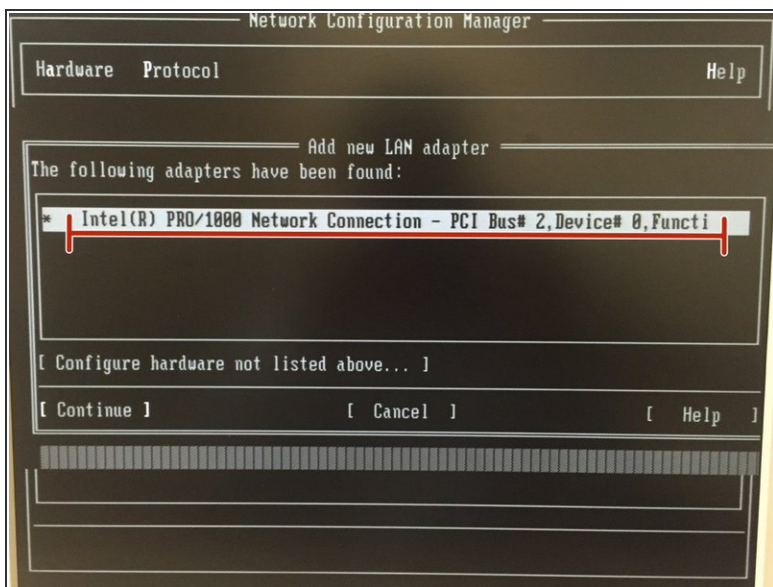
- Select *-SCO TCP/IP*
- And *ADD*

## Step 5



- Check data, and select *OK*
- Confirm the configuration - *OK*

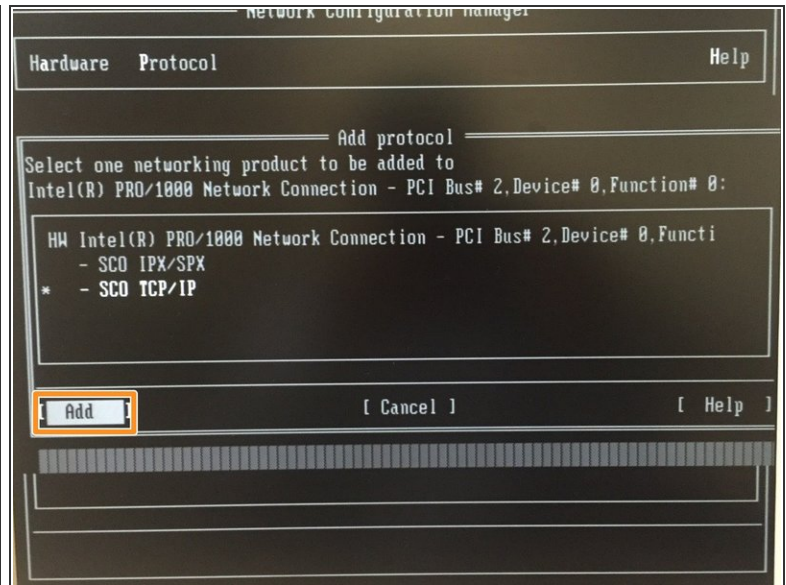
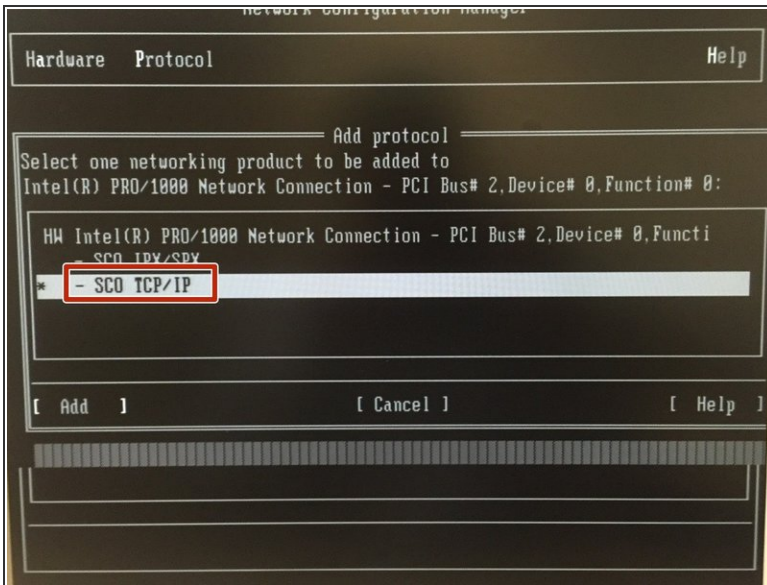
## Step 6



- Add new LAN adapter *Intel(R) PRO/1000 Netw.....*
- And select *Continue*

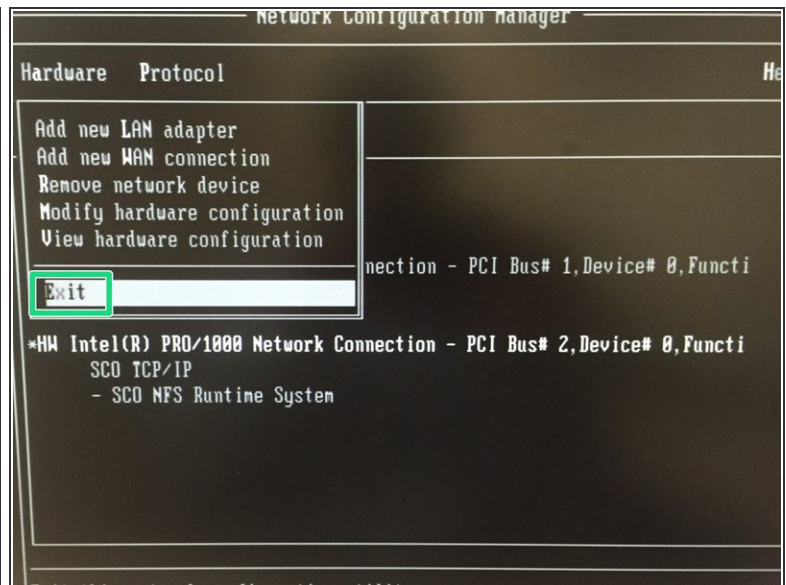
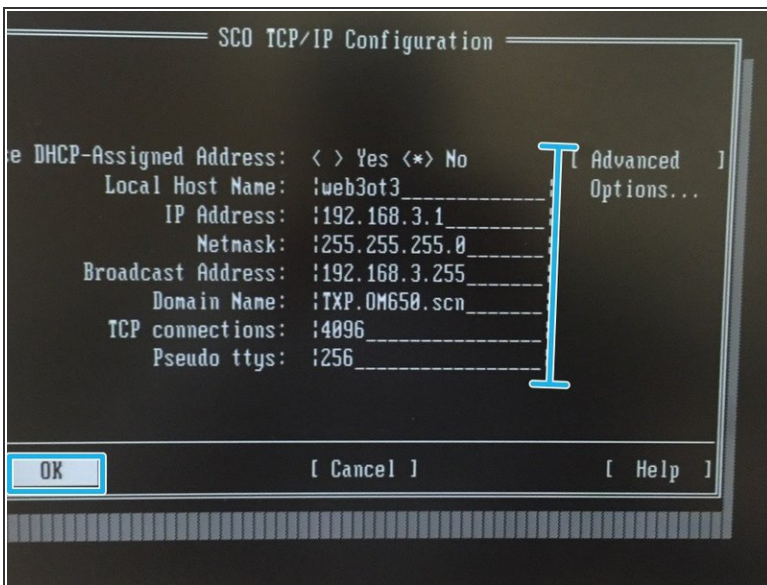


## Step 7



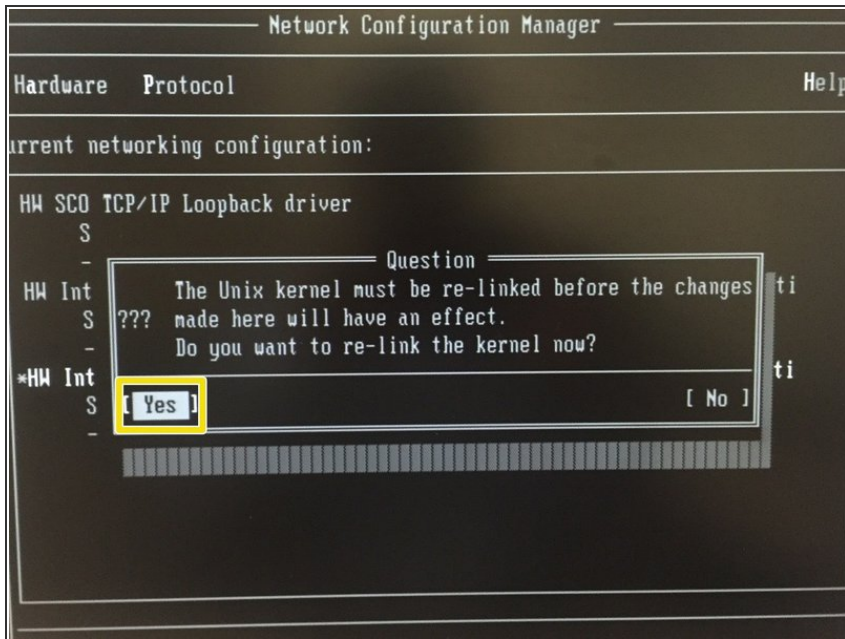
- Select *SCO TCP/IP*
- And *Add*

## Step 8



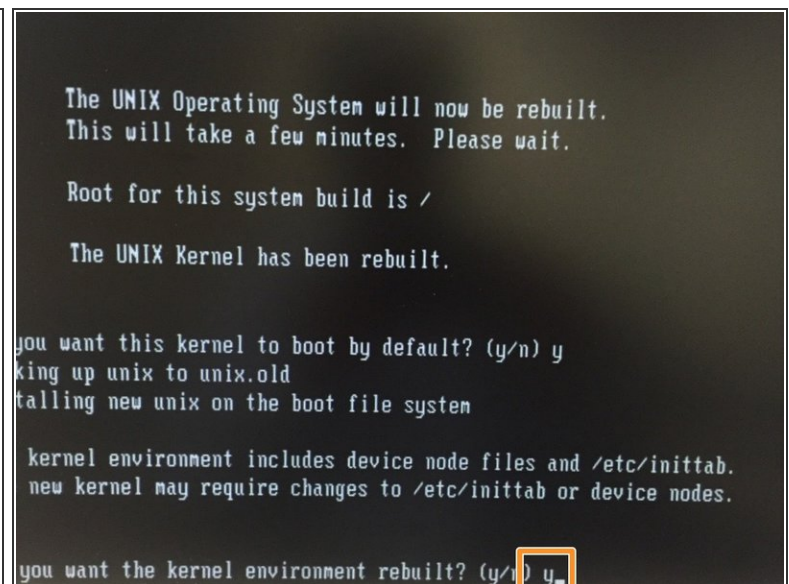
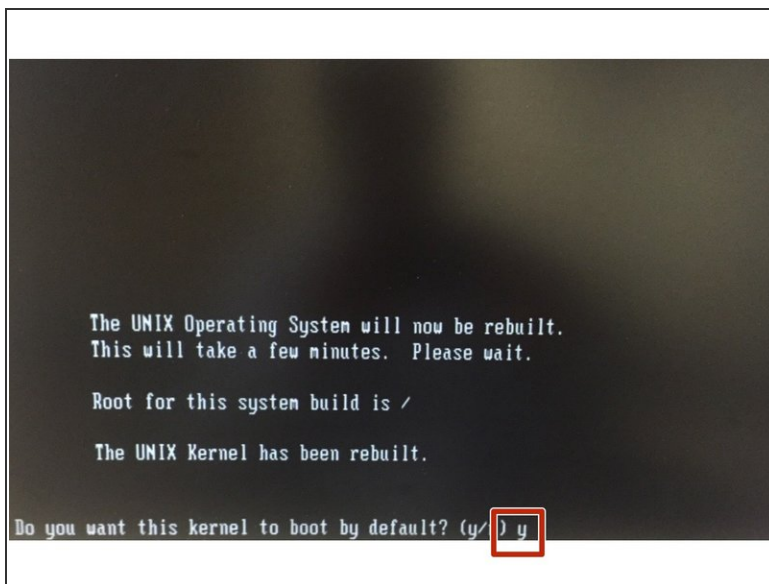
- Check data, and select *OK*
- And select *EXIT*

## Step 9



- In this question select **YES**

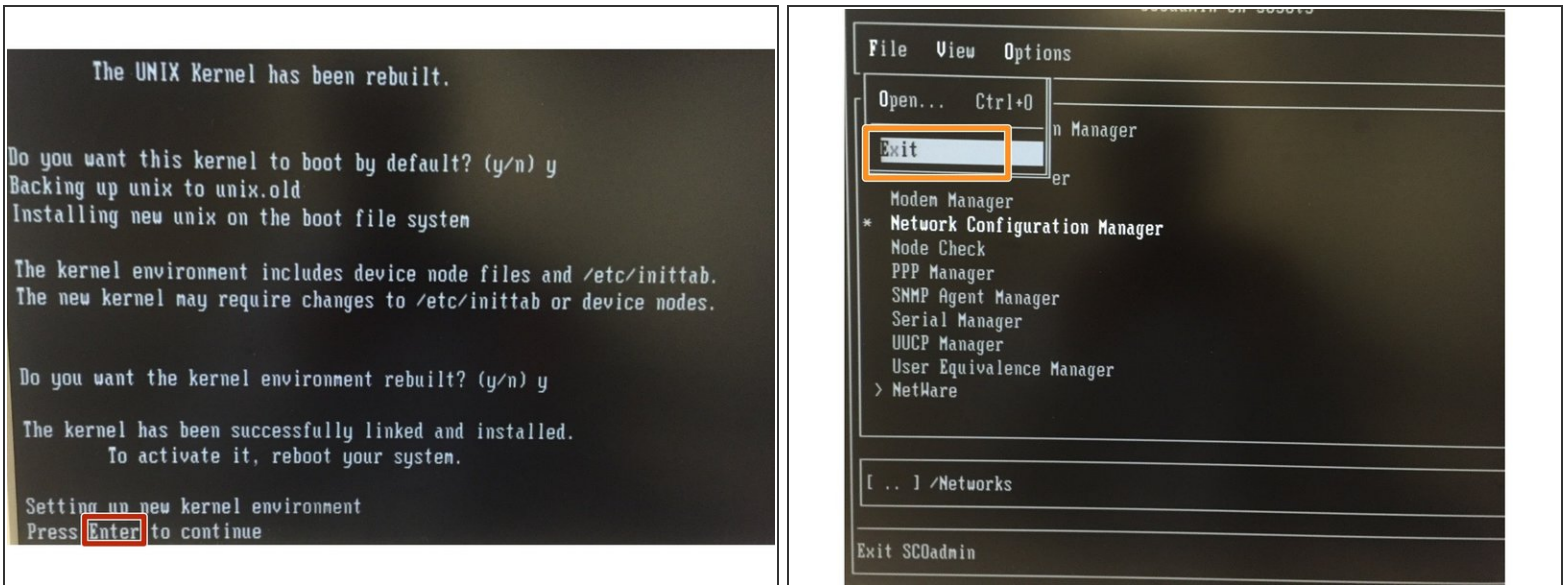
## Step 10



- if you want. Select **Y** and **ENTER**
- if you want. Select **Y** and **ENTER**



## Step 11



- Press ENTER to continue
- And EXIT

## Step 12



- Insert init 6 to reset